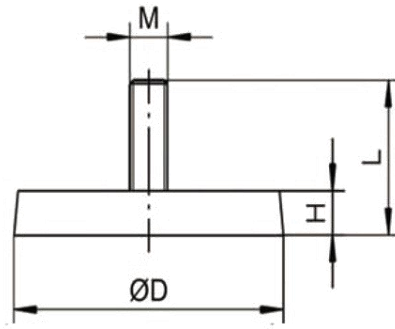
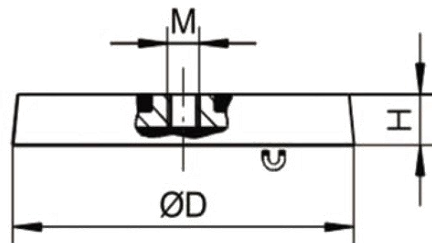


1.External Thread Rubber Coated Magnet



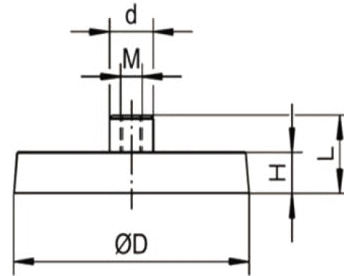
Model	D(mm)	H(mm)	L(mm)	M	Weight(g)	Pull Force(KG)
LURA22	22	6	13	M3-M6 1/4-20	12	3.5
LURA31	31	6	21		22	7.5
LURA36	36	7	22		27	7.5
LURA43	43	6	21		34	8.5
LURA55	55	8.5	23.5	M4-M10	71	18
LURA66	66	8	23.5	1/4-20	100	20
LURA88	88	8	23.5	M5-M12	185	42
LURA135	135	8	23.5	1/4-203/8-16	428	55

2.Internal Thread Rubber Coated Magnet



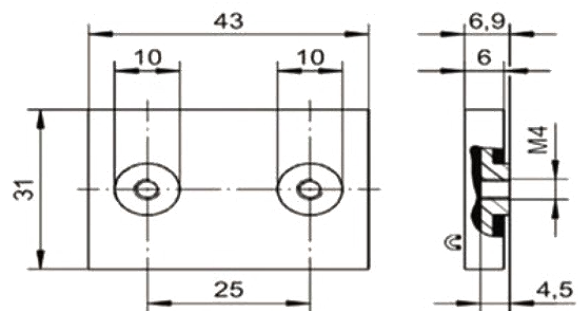
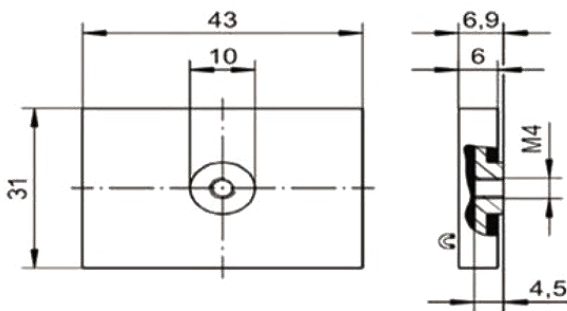
Model	D(mm)	H(mm)	M	Weight(g)	Pull Force(KG)
LURB22	22	7	M3-M6, 1/4-20	10	3.5
LURB31	31	6		18	7.5
LURB36	36	7		23	7.5
LURB43	43	6		30	8.5
LURB55	55	8.5	M4-M10, 1/4-20	68	18
LURB66	66	8.5		97	20
LURB88	88	8.5	M5-M12, 1/4-20, 3/8-16	175	42
LURB135	135	8.5		418	55

3.Screwed Bush Rubber Coated Magnet



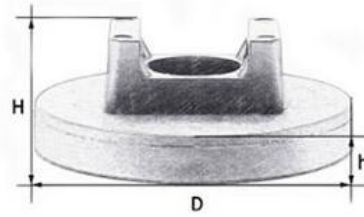
Model	D(mm)	H(mm)	d(mm)	L(mm)	M	Weight(g)	Pull Force(KG)
LURC22	22	6	8	11.5	M3-M6 1/4-20	11	3.5
LURC31	31	6	8	11.5		22	7.5
LURC36	36	7	8	11.5		24	7.5
LURC43	43	6	8	10.5		32	8.5
LURC55	55	8.5	12	14	M4-M10 1/4-20	72	18
LURC66	66	8.5	12	14		101	20
LURC88	88	8.5	15	14	M5-M12 1/4-20,3/8-16	178	42
LURC135	135	8.5	15	14		420	55

4.Rectangular Rubber Coated Magnet



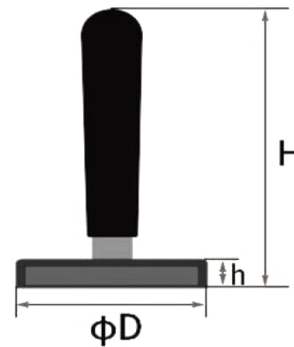
Model	L(mm)	B(mm)	H(mm)	M	Weight(g)	Pull Force(KG)
LURE43-1	43	31	6.9	M4*1	27	8.5
LURE43-2	43	31	6.9	M4*2	28	8.5

5. Rubber Coated Magnet For Cable Ties Base



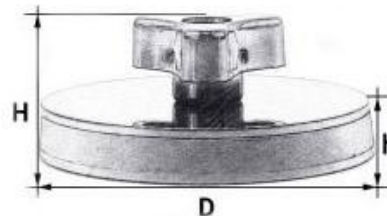
Model	D(mm)	H(mm)	h(mm)	Weight(g)	Pull Force(KG)
LURG22	22	16	6	15	3.5
LURG31	31	16	6	23	7
LURG43	43	16	6	34	8.5

6. Rubber Coated Magnet With Handle



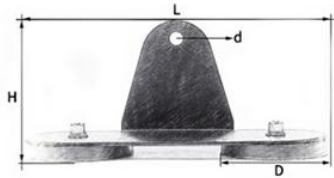
Model	D(mm)	H(mm)	h(mm)	Weight(g)	Pull Force(KG)
LURF43	43	68	6	42	8.5
LURF66	66	98	8	118	22
LURF88	88	98	8	205	45

7. Rubber Coated Magnet For Car Roof Advisting Base

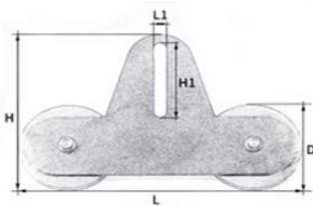


Model	D(mm)	H(mm)	h(mm)	Weight(g)	Pull Force(KG)
LURH22	43	23	6	42	10
LURH31	66	26	8.5	108	18
LURH43	88	26	8.5	197	42

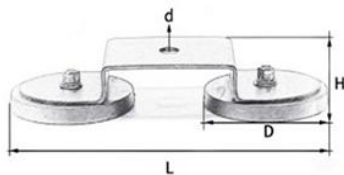
8.Magnetic Sucker Holder With Rubber Coated Magnet



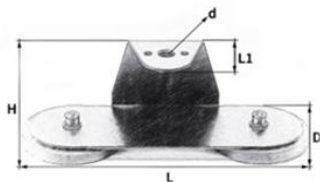
Model	D(mm)	H(mm)	L(mm)	d(mm)	Weight(g)	Pull Force(KG)
LURSA66	66	80	185	8	400	40
LURSA88	68	80	210	8	600	160



Model	D(mm)	H(mm)	L(mm)	H1(mm)	L1(mm)	Weight(g)	Pull Force(KG)
LURSB66	66	125	185	60	8	365	40
LURSB88	68	125	210	60	8	560	80

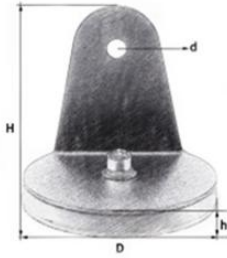


Model	D(mm)	H(mm)	L(mm)	d(mm)	Weight(g)	Pull Force(KG)
LURSC66	66	30	170	10	345	40
LURSC88	68	30	195	10	545	80



Model	D(mm)	H(mm)	L(mm)	L1(mm)	d(mm)	Weight(g)	Pull Force(KG)
LURSD66	66	60	185	45	10	400	40
LURSD88	68	60	210	45	10	605	80

8.Magnetic Sucker Holder With Rubber Coated Magnet



Model	D(mm)	H(mm)	h(mm)	d(mm)	Weight(g)	Pull Force(KG)
LURSE88	88	80	10.5	10	305	45



Xiamen Linkup Magnet Co.,Ltd

Room 506, No.319-9, Hubin East Road, Siming District, Xiamen, Fujian Province, China.

Tel: +86-592-2069826

Email: Sales@linkupmagnets.com

Website: www.linkupmagnets.com