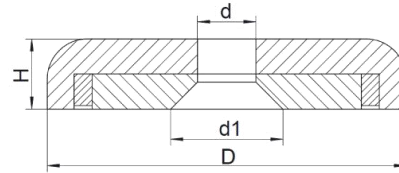
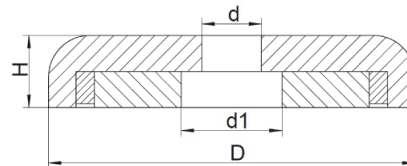


1.Pot Neodymium Magnet With Countersunk Hole



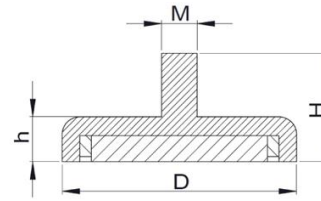
Model	D(mm)	d(mm)	d1(mm)	H(mm)	Weight(g)	Pull Force(kg)
PSNA12	12	3.5	6.5	4.5	4	2.5
PSNA16	16	3.5	6.5	5.2	7	6
PSNA20	20	4.5	8.6	7.2	15	11
PSNA25	25	5.5	10.6	7.7	24	22
PSNA32	32	5.5	10.6	7.8	39	32
PSNA36	36	6.5	11.3	7.6	50	43
PSNA42	42	6.5	11.3	8.8	77	65
PLNA48	48	8.5	19	11	120	75
PLNA55	55	8.5	19	12	192	95
PLNA60	60	8.5	19	15	243	160
PLNA70	70	10.5	21	17	440	200
PLNA75	75	10.5	21	18	480	250
PLNA80	80	10.5	21	18	655	280

2.Pot Neodymium Magnet With Straight Hole



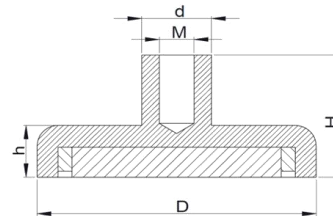
Model	D(mm)	d(mm)	d1(mm)	H(mm)	Weight(g)	Pull Force(kg)
PSNB12	12	3.5	6.5	4.5	4	2
PSNB16	16	3.5	6.5	5	7	5
PSNB20	20	4.5	8	7	15	10
PSNB25	25	5.5	9	8	24	20
PSNB32	32	5.5	9	8	39	30
PSNB36	36	6.5	11	8	50	40
PSNB42	42	6.5	11	8.6	77	60
PLNB48	48	8.5	15	11	120	70
PLNB55	55	8.5	15	12	192	90
PLNB60	60	8.5	15	15	243	150
PLNB70	70	10.5	18	17	440	180
PLNB75	75	10.5	18	18	480	220
PLNB80	80	10.5	18	18	655	240

3.Pot Neomum Magnet With External Thread



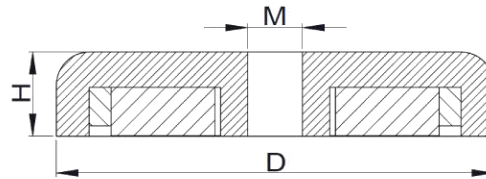
Model	D(mm)	H(mm)	h(mm)	M(mm)	Weight(g)	Pull Force(kg)
PSNC10	10	14	5	M3	4	2
PSNC12	12	14	5	M3	5	4
PSNC16	16	13.2	5	M4	9	8
PSNC20	20	16	7	M4	17	12
PSNC25	25	17	8	M5	30	25
PSNC32	32	18	8	M6	50	34
PSNC36	36	18	8	M6	62	50
PSNC42	42	18	8.6	M6	89	72
PLNC48	48	24	11	M8	152	81
PLNC55	55	28	12	M8	220	95
PLNC60	60	28	15	M8	325	160
PLNC70	70	34	17	M10	510	200
PLNC75	75	35	18	M10	620	250
PLNC80	80	35	18	M10	700	300

4.Pot Neodmium Magnet With Screwed Bush



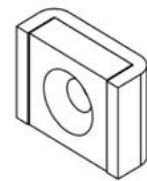
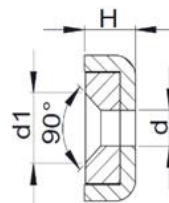
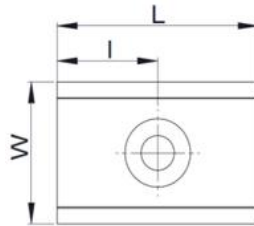
Model	D(mm)	d(mm)	H(mm)	h(mm)	M(mm)	Weight(g)	Pull Force(kg)
PSND12	12	6	12.5	5	M3	5	4
PSND16	16	6.5	12.6	5	M4	9	8
PSND20	20	6.5	14	7	M4	17	12
PSND25	25	7.5	17	8	M5	31	25
PSND32	32	10	18	8	M6	52	34
PSND36	36	10	18	8	M6	60	50
PSND42	42	10	18	8.6	M6	95	72
PLND48	48	12	24	11	M8	160	81
PLND55	55	12	28	12	M8	230	95
PLND60	60	12	28	15	M8	340	160
PLND70	70	17	34	17	M10	520	200
PLND75	75	17	35	18	M10	635	250
PLND80	80	17	35	18	M10	715	300

5.Pot Neodymium Magnet With Internal Thread

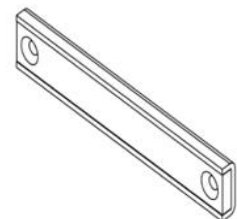
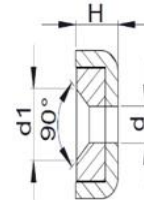
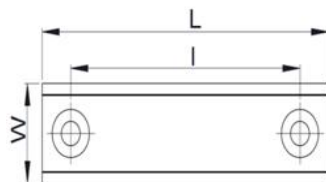


Model	D(mm)	H(mm)	M	Weight(g)	Pull Force(kg)
PSNH16	16	5	M3	7	4
PSNH20	20	7	M4	14	8
PSNH25	25	7.7	M5	25	17
PSNH32	32	7.7	M5	44	27
PSNH36	36	7.5	M6	55	36
PSNH42	42	8.6	M6	86	50
PSNH48	48	10.6	M8	132	70
PLNH60	60	12	M8	229	140
PLNH75	75	15	M10	464	220

6.U Channel Rectangular Pot Neodymium Magnet

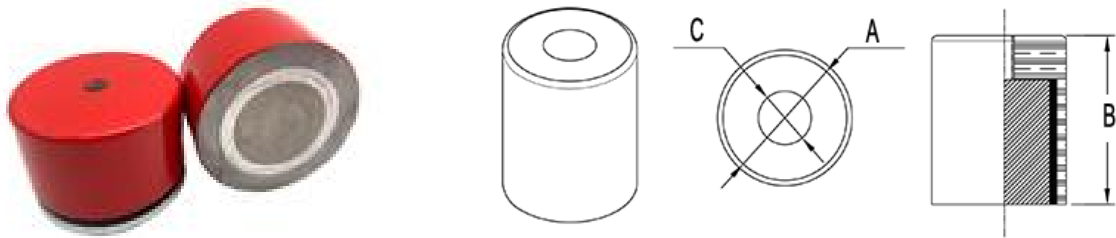


Model	L(mm)	l(mm)	W(mm)	H(mm)	d(mm)	d1(mm)	Weight(g)	Pull Force(KG)
PSNI10	10	5	13.5	5	3.3	6.5	5	4
PSNI15	15	7.5	13.5	5	3.3	6.5	7	7
PSNI20	20	10	13.5	5	3.3	6.5	10	8
PSNI30	30	15	13.5	5	3.3	6.5	15	6



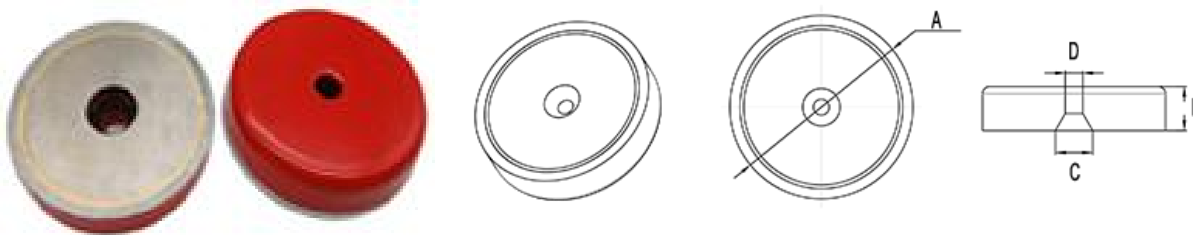
Model	L(mm)	l(mm)	W(mm)	H(mm)	d(mm)	d1(mm)	Weight(g)	Pull Force(KG)
PSNI40	40	30	13.5	5	3.3	6.5	19	17
PSNI50	50	40	13.5	5	3.3	6.5	24	27
PSNI60	60	50	13.5	5	3.3	6.5	30	30
PSNI80	80	70	13.5	5	3.3	6.5	38	33
PSN100	100	90	13.5	5	3.3	6.5	48	36
PSN120	120	100	13.5	5	3.3	6.5	58	40

1. Alnico Deep Pot Magnet



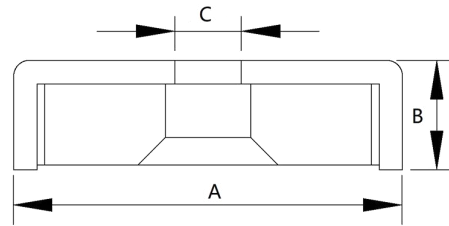
Model	Dia(mm)	Height(mm)	Central Hole	Pull Force(KG)
LUA101	9.5	15.1	M3	1
LUA102	12.7	15.8	M4	2
LUA103	17.5	16	M6	3
LUA104	20.5	19	M6	5
LUA105	27	25	M6	10
LUA106	30	35	M6	15
LUA107	35	20	M6	15
LUA108	35	30	M6	18
LUA109	40	30	M8	30
LUA110	40	35	M6	35
LUA111	45	25	M6	15
LUA112	45	30	M8	40
LUA113	50	40	M8	50
LUA114	65	43	M12	60

2. Alnico Shallw Pot Magnet



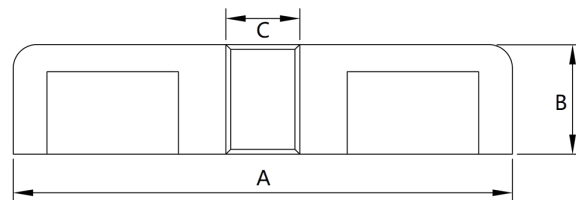
Part No.	Dia (mm)	Height (mm)	Big Hole (mm)	Small Hole (mm)	Pull Force (KG)
KMA201	19	8	9	M4	3
KMA202	26	12	10	M5	5.5
KMA203	28.6	9	10	M6	7.5
KMA204	38	11	10	M6	13
KMA205	50	12	10	M6	30
KMA206	58	15	15	M12	50

1.Ferrite Pot Magnet With Countersnk Hole



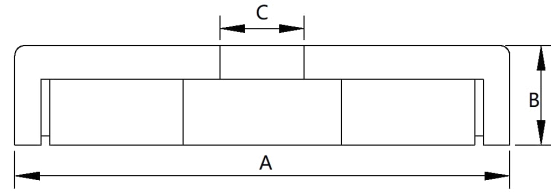
Mold	Pot			Pull Force (KG)
	A	B	C	
LUA04-16	16	4.5	3.3	1.4
LUA04-20	20	6	4.2	2.7
LUA04-25	25	7	5.5	3
LUA04-32	32	7	5.5	7.2
LUA04-40	40	8	5.5	13
LUA04-50	50	12	6	18
LUA04-80	80	18	8.5	29
LUA04-90	90	12.2	10	49

2.Ferrite Pot Magnet With Internal Thread



Model	Pot			Pull Force (KG)
	A	B	C	
LUF09-25	25	7	M4	3.6
LUF09-32	32	7	M4	7.5
LUF09-40	40	8	M4	9
LUF09-50	50	10	M6	17
LUF09-63	63	14	M8	29
LUF09-63	63	14	M8	35
LUF09-80	80	20	M10	550

3.Ferite Pot Magnet With Straight Hole



Model	Pot			Pull Force (KG)
	A	B	C	
LUF06-24	24	4.9	3.2	3
LUF06-24A	24	4.9	6.75	3
LUF06-32	32	6	6	6
LUF06-36	36	7	4.8	7
LUF06-46	46	7.1	4.76	10
LUF06-50	50	10	8.5	18
LUF06-60.3	60.3	8.9	6.4	19
LUF06-63	63	14	6.5	29
LUF06-67	67	9.5	7	29
LUF06-71	71	15.3	10.5	35
LUF06-80	80	18	6.5	47.5
LUF06-80	80	10.5	7.2	29
LUF06-88	88	18	8.5	55
LUF06-95	95	12.7	12.7	62
LUF06-100	100	22	10.5	68
LUF06-124	124	12.7	12.7	70

Features of pot magnet with different materials.

1. Neodymium pot magnet have super-powerful magnetic force,max vertical pulling force can reach 1000kg.
2. Alnico pot magnet have a very good temperature resistance,up to 350°C.
3. Ferrite pot magnet will be more economical,if the requirement of pull force is not high,it's the best option.

Xiamen Linkup Magnet Co.,Ltd

Room 506,No.319-9,Hubin East Road,Siming District,Xiamen,Fujian Province,China.

Tel:+86-592-2069826

Email:Sales@linkupmagnets.com

Website:www.linkupmagnets.com